

**DAMIR VIŠIĆ, ing. pom. prom.**

Stepinčeva 71, SPLIT

stalni sudski vještak za pomorski promet i procjenitelj vrijednosti plovila

Naručitelj: **YACHTING TECHNOLOGY  
PRODUCTS d. o.o. u stečaju**

Krešimirova 147  
21211 Vranjic

## **IZVJEŠTAJ VJEŠTAKA**

**PREDMET:**

**Procjena vrijednosti dijela opreme za gradnju plovila**

**Quicksilver 855 WE**

Split, 6. prosinca 2022.

## Sadržaj

<b>1. NALAZ</b>	<b>2</b>
<b>1.1 OSNOVNI PODACI</b>	<b>2</b>
<b>1.2 ELEMENTI ZA IZRADU PROCJENE</b>	<b>3</b>
<b>1.3 ZATEČENO STANJE</b>	<b>3</b>
<b>2. MIŠLJENJE</b>	<b>4</b>
<b>3. PROCJENA VRIJEDNOSTI</b>	<b>5</b>
<b>4. PRILOZI</b>	<b>6</b>
slike	6
popis zaliha br. 6	9

# NALAZ I MIŠLJENJE

## 1. Nalaz

Prema narudžbi naručitelja, Yachting Technology Products d.o.o. u stečaju, iz Vranjica, zatražena je procjena ukupne vrijednosti zatečene opreme za gradnju plovila Quicksilver 855 WE (slika 1). Oprema se nalazi u prostorima Salonita u Vranjicu. Uz prisustvo stečajnog upravitelja, g. Ivana Morosavljevića, pregled sam obavio 25.11.2022.

### 1.1 OSNOVNI PODACI

Ime plovila:	----
Zastava:	----
Reg. oznaka:	----
Oznaka Jahte:	----
Serijski broj:	----
Vlasnik:	<b>YACHTING TECHNOLOGY PRODUCTS d.o.o. u stečaju, Krešimirova 147, Vranjic</b>
Tip:	<b>dio opreme za izradu</b>
Brodograditelj:	<b>YACHTING TECHNOLOGY PRODUCTS d.o.o. u stečaju, Krešimirova 147, Vranjic</b>
Model:	<b>Quicksilver 855 WE</b>
Dužina:	<b>7,99 m</b>
Širina:	<b>2,98 m</b>
Visina:	<b>3,45 m</b>
Istisnina:	----
Materijal:	<b>Stakloplastika</b>
Pogonski stroj:	----
Broj motora:	----
Snaga:	----
Godina proizvodnje:	----

**Napomena:**

*navedeni podaci nisu provjeravani, nego su uneseni prema izjavi predstavnika vlasnika.*

## 1.2 ELEMENTI ZA IZRADU PROCJENE

Za izradu procjene vrijednosti ovih kalupa uzeo sam u obzir slijedeće elemente:

- kvalitetu opreme
- opće stanje opreme
- zaštićenost i uvjete skladištenja

## 1.3 ZATEČENO STANJE

- Oprema se nalazi složena na paletama u stanju u kakvom je bila i dopremljena, a skladište je natkriveno, ali ne i termo izolirano.
- Smole, gelcoati, katalizatori, montažna ljepila, antifriz i drugi kemijski materijali nalaze se u 9 kontejnera od 1000 litara, 21 bačvi od 200 litara, 4 manje bačve i 20 - 25 kanti. (slika 2).
- Sav ovaj repromaterijal isporučen je tijekom 2017. i 2018. godine (slike 3 i 4).
- Spremnici pojedinih materijala vidno su deformirani (slike 5 i 6).
- Ostala oprema odložena je na pet paleta (slika 7), raspoređenim prema fazama izrade (slika 8), ali bez popratne specifikacije i relevantnog popisa.
- Većina dodatne opreme u originalnom je pakiranju (slike 9 – 16), sve cijevi odvojene na jednu paletu (slika 17), a sitnija oprema po manjim kutijama, opet prema fazama ugradnje.
- Jedini popratni dokument je Popis zaliha 6 s inventarnom vrijednošću, nepoznatog datuma.
- Dio zaliha s Popisa opreme je za otpis:
  - smole, katalizatori, gelcoati, topcoati, kitovi, prajmeri, lakovi, hidrauličnom ulju, antifrizu, brtvilima i ostalim tekućima, istekao je vijek trajanja. (za dva plovila vrijednosti 333.440 kn)
  - staklene vune i rovinga (za dva plovila vrijednosti 10.000 kn); folija (za dva plovila vrijednosti 6.500 kn); baterija (za dva plovila vrijednosti 4.400 kn); vjetrobрана – prozora kabina (za dva plovila vrijednosti 10.400 kn); vrata kabina (za dva plovila vrijednosti 53.600 kn); šperploče, mahagonija i drvenarije (za dva plovila vrijednosti 102.000 kn); plexiglasa raznih debljina (za dva plovila vrijednosti 22.880 kn); poliuretanskih ploča raznih debljina (za dva plovila vrijednosti 17.760 kn); drvenih laminata (za dva plovila vrijednosti 76.400 kn); Flexiteek (za dva plovila vrijednosti 8.800 kn); vanbrodskog motora Mercury F40 (15.000 kn) i platna biminia (2.240 kn) – **svega toga NEMA.**
- Dio zaliha prema priloženom popisu i inventurnom vrijednošću je identificiran, a to su:

električno sidreno vitlo (2.560,00 kn); galvanski izolator (580,00 kn); Gorenje mikrovalna (350,00 kn); grijač vode 4kW 22l (900,00 kn); harness kablova komandne ploče (2.300,00 kn); inox ljestve za brod (600,00 kn); kit bypass pumpe (1.840,00 kn); klizači vrata (klizne stjene) 2kom (2 x 1.200 – 2.400,00 kn); kutija akumulatora sa poklopcem 2kom (2 x 30,00 – 60,00 kn); led svjetla navi sid (600,00 kn); Mercury ručice gasa za model Verado (1.330,00 kn); motori za brisače wiper 2D (230,00 kn); OEM Diagnostics G3 Tool Kit Mercury (2.200,00 kn); okviri za bočne prozore 2kom (2 x 2.320,00 – 4.640,00 kn); pramčana portela (2.340,00 kn); propeler bowthruster (3.100,00 kn); propeleri motora, lijevo i desnokretni (4.800,00 kn); pumpa za tuš (250,00 kn); Quicksilver ACT TRIM 150-250D (1.680,00 kn); radar Simrad Broadband 3G (6.400,00 kn); set bitvi (1.950,00 kn); set hidrauličnih trim flapsova (3.840,00 kn); set inox ograde za Quicksilver 855 WE (1.920,00 kn); set senzora brzine, brzinomjera i brojača okretaja komandne ploče (3.700,00 kn); Simrad navigacija NSS9 EVO3 9 inča (5.600,00 kn); sjedalo suvozača (800,00 kn); spremnik goriva 400l 4kom (4 x 2.250 – 9.000,00 kn); upravljačka ploča sa setom zvučnika FUSION MS vodootporni (1.160,00 kn); Vitrefrigo frižider (1.760,00 kn); WC školjka sa električnom pumpom (910,00 kn).

- Zbog nejasnih internih šifri i kratica na Popisu dio zaliha po istome nije identificiran, te sam ih pojedinačno procijenio, vrijednošću proporcionalnoj tržišnoj vrijednosti u odnosu na inventurnu vrijednost identificirane opreme, a to su:

bočni šiber prozor (1.000,00 kn); cilindar kormila (3.200,00 kn); fineštrin 4 kom (4 x 2.000,00 – 8.000,00 kn); hidraulična pumpa volana (2.100,00 kn); komandne ploče trima flapsova (8.000,00 kn); kuhinjska slavina (500,00 kn); nosač sidra (500,00 kn); palubni inox čepovi (2 x 350,00 – 700,00 kn); radiostanica (1.600,00 kn); sajle volana i gasa Mercury 4kom (4 x 350,00 – 1.400,00 kn); sjedalo vozača sa pomičnim mehanizmom (1.600,00 kn).

- Dio zaliha koje ne nose nikakvu oznaku, a zbog nejasnih internih šifri i kratica na Popisu te drugih objektivnih okolnosti, nije mogao biti procijenjen prema inventurnom popisu, već sam ga procijenio zbirno. To se odnosi na:

bravice vrata i ormara; bravice vrata i poklopaca; instalacije ispusta u more s U cijevi; komandna ploča za upravljanje thrusterom s krme; komplet set cijevi, crijeva od vode, benzina, ventilacije (grijanja/hlađenja), plina, webasto itd.; kompletna instalacija kablova; noge za stol i stolice; nosače stola; okvir krovnog prozora s plexiglasom; poklopce za inspekcijske otvore; set postolja za ribarske štapove; te mnoštvo ostale sitne i potrošne opreme za opremanje plovila Quicksilver 855, uključujući priručnike, naljepnice, cijevne priključke, fitinge, adaptere, vijke i drugo.

## 2. Mišljenje

Prema informacijama dobivenim od stečajnog upravitelja, g. Ivana Morosavljevića, ukupna vrijednost isporučene opreme, a koja je dostatna za dva plovila Quicksilver 855 WE, je 940.000,00 kuna, što je za jedno plovilo vrijednost opreme od 470.000,00 kuna. Vrijednost dijela opreme koja je za otpis je 340.000,00 kuna, dakle, očekivana vrijednost preostale opreme trebala bi biti približno 130.000,00 kuna.

Vrijednost opreme identificirane prema popisu i inventurnoj vrijednosti je 69.000,00 kuna, a vrijednost one koja po istom popisu nije identificirana i procijenjena je pojedinačno, vrijednošću proporcionalnoj tržišnoj vrijednosti u odnosu na inventurnu vrijednost identificirane opreme, je 28.600,00 kuna. Preostalu neidentificiranu opremu, a koja se iz objektivnih okolnosti nije mogla procijeniti prema inventurnoj listi procjenjujem zbirno na iznos od 20.000,00 kuna.

### 3. Procjena vrijednosti

Uzimajući u obzir sve gore navedeno, procjenjujem da neto vrijednost pregledanog dijela opreme za gradnju plovila Quicksilver 855 WE u neto iznosu, bez PDV-a:

**118.400 kn**

(stoosamnaesttisućačetiristo kuna)

Stalni sudski vještak  
Damir Višić, ing. pom. prometa



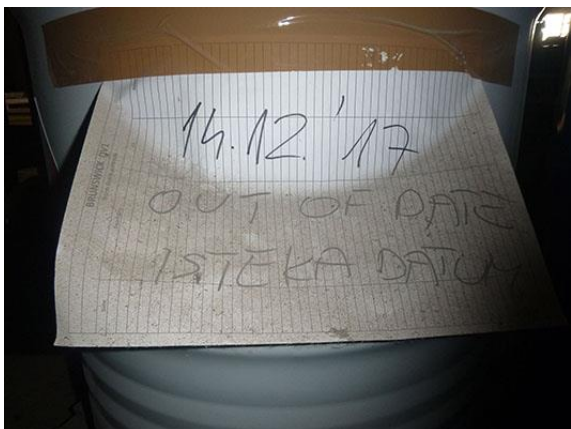
#### 4. Prilozi - slike



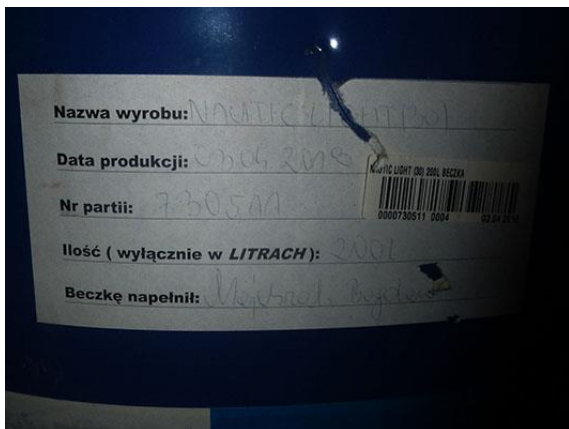
slika 1



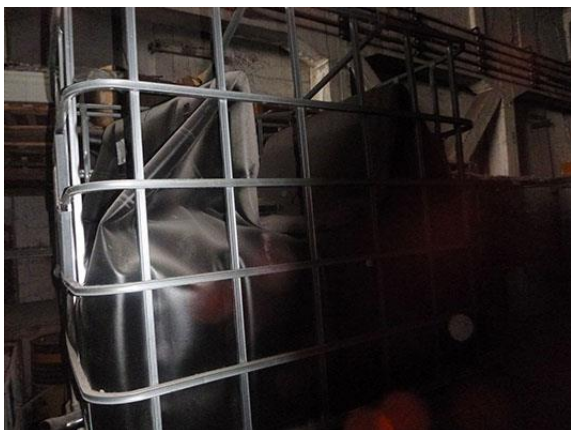
slika 2



slika 3



slika 4



slika 5

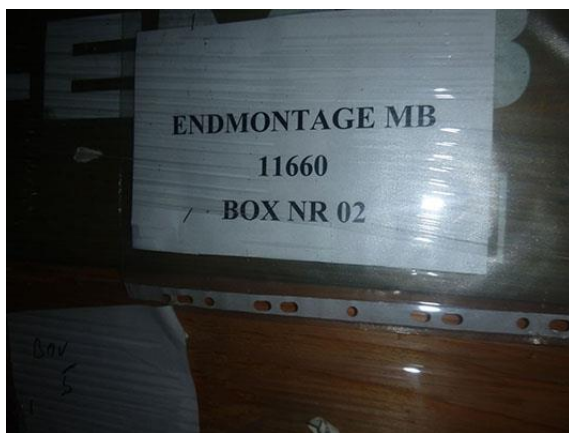


slika 6





slika 7



slika 8



slika 9



slika 10



slika 11



slika 12





slika 13



slika 14



slika 15



slika 16



slika 17



slika 18

## - popis zaliha

Parts with inventory value for company 764

Stock code: 6 Note: Cost currency is PLN

Plant	k Cod e	ct Line	Part Number	Part Description	Physica l Stock	of Meas ure	Unit Std Cost	Extended Cost	ilošć zračuna
I2STK	I2STH	I2PRT	I2PRT2	PMEDSC	I2PHYS	PMUTL	POSTDC		
29	6	INT	1039247	BUMPER 3/4"DIA X	18	PC	1,05	18,95	
29	6	INT	1040211	NUT- BBL #10-24 X	12	PC	1,08	12,98	
29	6	INT	1042100B	HOSE WATER 3/4" B	63	MT	3,66	230,75	
29	6	INT	1048834	A/C COMP HOSE RIN	4	PC	35,20	140,78	4
29	6	INT	1058957	HOSE, 5/8" SOFT WAL	62	MT	3,69	228,84	
29	6	INT	1074780	CYLINDER GAS 40#	2	PC	13,10	26,20	
29	6	Q/S	1128345	SPACER @5	10	PC	3,12	31,15	10
29	6	INT	1232156	TRIM-SEAL, #X1333B	198	MT	5,30	1 050,31	
29	6	INT	123398	CLAMP 8X16	19	PC	0,56	10,57	
29	6	INT	123489	CLAMP 25X51 INOX	18	PC	1,02	18,38	
29	6	INT	123760	10MM FUEL HOSE	60	MT	7,38	442,70	
29	6	INT	123778	HOSE, FUEL 5/8"	61	MT	10,59	646,23	
29	6	INT	124412B	HOSE, PVC 5/8"	90	MT	2,95	265,23	
29	6	INT	1485481	HOSE, FUEL 8MM	70	MT	7,95	556,63	
29	6	INT	1497452	TAPE FOAM NEOPREN	30	MT	5,95	178,56	40
29	6	INT	1690487	STOP, MINI HOLDER	5	PC	9,62	48,09	
29	6	INT	1692922	3/4" ID CORR PVC	30,4	MT	3,86	117,28	
29	6	INT	1692954	HOSE PVC 1.5 WHITE	2	MT	6,69	13,37	
29	6	INT	1692956	SCREW, MACHINE	9	PC	0,08	0,70	
29	6	INT	1693249	ELBOW, EQUAL	1	PC	4,91	4,91	
29	6	INT	1693251	TEE, EQUAL 15MMX	5	PC	6,78	33,91	
29	6	INT	1693253	ADAPTER FML 1/2"	5	PC	5,29	26,43	
29	6	INT	1693274	FLEXIBLE HEATER	1	PC	22,41	22,41	
29	6	INT	1693275	ELBOW ADAPTER 1/2	6	PC	5,29	31,72	
29	6	INT	1694239B	HOSE- SANI 1 ID	40	MT	5,89	235,76	
29	6	INT	1696514	THRU HULL 1.5"	2	PC	17,47	34,94	
29	6	INT	1698881	ANGLE- 3/4X3/4 W/	80	MT	3,41	272,92	
29	6	INT	1699463	THRU HULL PLASTIC	1	PC	3,96	3,96	
29	6	INT	1701331B	CATALYST CLEAR	410	KG	14,47	5 933,29	
29	6	INT	1701342	HOSE VENT BLOWER	5	MT	1,95	9,76	
29	6	INT	1701381	BARB BRASS 3/4" MI	1	PC	13,39	13,39	
29	6	INT	1701595	BUMPER GLASS DOOR	1	PC	1,31	1,31	
29	6	INT	1701610	SHORE POWER	1	PC	43,78	43,78	1
29	6	INT	1701950	VALVE ANTISIPH3/8	1	PC	11,40	11,40	1
29	6	INT	1702532	CLEAT, SEAT 4" BLK	2	PC	0,73	1,45	2
29	6	INT	1703616	VALVE, BALL 3/4"	1	PC	31,15	31,15	
29	6	INT	1703694	VALVE 1" BALL	2	PC	44,29	88,58	
29	6	INT	1704249B	CATALYST RED	310	KG	14,90	4 619,27	
29	6	INT	1704767	ADAPTER, BRZ 1" MPT	2	PC	17,85	35,70	
29	6	INT	1704905	CORD, SHOCK/BUNGIE	109	MT	2,21	240,52	
29	6	INT	1705174	EDGE TRIM FOR	65	MT	11,16	725,17	
29	6	INT	1706633	HOSE 3/4" HARDWALL	13	MT	20,99	272,85	
29	6	INT	1727372	TAPE- SOLID 1/2	65,6	MT	0,57	37,12	
29	6	INT	1733087	FOAM, 3.5" X 54"	2,34	M2	125,68	294,10	
29	6	INT	1733662	THRU-HULL 1.25 BA	4	PC	16,46	65,84	
29	6	INT	1753746	SCREW, MACHINE #	12	PC	0,10	1,17	
29	6	INT	1760963	PUMP SAHARA 500	1	PC	58,36	58,36	
29	6	INT	1774617	GELCOAT S WHITE A	1290	KG	13,81	17 813,35	
29	6	INT	1781437	LATCH, COMPRESSION	6	PC	62,27	373,80	
29	6	INT	1781439	CATH. PAWL 2" OFFSE	14	PC	4,80	67,19	
29	6	INT	1781440	PLATE, DEEP BRKT 2	10	PC	12,34	123,35	
29	6	INT	1785952	TREVIRA 001/420	687	MT	1,14	783,28	
29	6	INT	1790728	MOUNT, CABLE TIE	150	PC	0,51	75,78	
29	6	INT	1794348	HOOK, SNAP 1/4" X2	1	PC	10,27	10,27	1
29	6	INT	1798594	NUT, BBL #10-24X	9	PC	5,64	50,79	
29	6	INT	1798770	BRACKET, H/S 3/4"	8	PC	1,09	8,71	
29	6	INT	1809076	DOOR HARDWARE WHI	20	MT	1,76	35,25	
29	6	INT	1811367	LABEL, DANGER CO	2	PC	1,45	2,90	
29	6	INT	1811368	LABEL, DANGER CO	2	PC	1,45	2,90	
29	6	INT	1812911	LABEL, DANGER CO	2	PC	1,45	2,90	
29	6	INT	1819273	CATCH, STRIKE PLA	11	PC	1,18	12,97	
29	6	INT	1833416	SPOTLIGHT, 135SL	1	PC	383,98	383,98	1
29	6	INT	1841111	PUMP, SHOWER SUMP	1	PC	152,50	152,50	
29	6	INT	1843338	PICKUP, 3/4" WATE	1	PC	35,79	35,79	
29	6	INT	1846523	LATCH, COMPACT 5/8	2	PC	115,56	231,13	
29	6	INT	1874391	WINDLASS, FOOT SW	1	PC	31,15	31,15	1
29	6	INT	1874392	WINDLASS, FOOT SW	1	PC	31,15	31,15	
29	6	INT	1878021	BASE, TBL FLUSH	5	PC	51,50	257,50	
29	6	INT	1878022	BASE, SURF BASE	3	PC	51,50	154,50	
29	6	INT	1878024	CAP, PLAS TBL	4	PC	5,44	21,78	
29	6	INT	1878025	BRACKET, TBL LEG	4	PR	24,61	98,43	
29	6	INT	1896799	HINGE, DRAFTED BU	32	PC	22,14	708,63	
29	6	INT	1907894	CUP, POLE STRG	1	PC	2,18	2,18	
29	6	INT	1911089	LIGHT, STEP WHT	6	PC	24,84	149,03	
29	6	INT	1915171	VENT, SS CLAMHELL	2	PC	15,58	31,15	
29	6	INT	1915911	FILTER, IN-LINE	6	PC	14,99	89,93	
29	6	INT	1916867	LATCH, COMPRESSION	7	PC	83,15	582,03	
29	6	INT	1929686	MOPE TUBE 15MM	215	MT	2,23	478,82	



29	6	INT	1929687	MDPE TUBE 15MM	138	MT	2,23	307,34	
29	6	INT	1929692	VALVE CHECK 15MM	3	PC	11,93	35,78	
29	6	INT	1942137	SPACER,WIPER 1/2"	2	PC	3,27	6,53	2
29	6	INT	1942968	ADAPTER, PLAS 1/2	2	PC	2,36	4,72	
29	6	INT	1947087	PUMP, PORTABLE WA	1	PC	112,36	112,36	
29	6	INT	1965892	TRIM SEAL,1678BTX	18	MT	36,04	648,68	
29	6	Q/S	19674A12	LANYRD SWTCH-DUAL	1	PC	117,29	117,29	1
29	6	INT	1971003	LEVER, SS CABLE R	1	PC	133,67	133,67	1
29	6	INT	1971017	DECK PLATE GAS CH	1	PC	77,34	77,34	
29	6	INT	1971019	DECK PLATE,WTR CH	2	PC	58,14	116,28	
29	6	INT	1971021	DECK PLATE,WASTE	1	PC	32,95	32,95	
29	6	INT	1971793	FIBERGL 450/125	850	KG	6,32	5 367,75	
29	6	INT	1971798	MATOROV,1250/125	55	KG	7,26	399,22	
29	6	INT	1971799	FIBERGLASS MATDB	5	KG	7,88	39,38	
29	6	INT	1971801	ROVING, 800/125 5	112	KG	5,15	577,21	
29	6	INT	1971935	PULL,PUSH-BUTTON	11	PC	23,32	256,56	
29	6	INT	1972727	RESIN DCPD/ORTHO	7500	KG	6,82	51 151,50	
29	6	INT	1972728	RESIN VINYLESTER/	1000	KG	11,45	11 451,20	
29	6	INT	1972931	GELCOAT H WHITE	240	KG	13,81	3 314,11	
29	6	INT	1975361	MATLINE 4MM	40	M2	13,09	523,72	
29	6	INT	1975734	ROD HOLDER	2	PC	18,17	36,34	2
29	6	INT	1975950	PLYWOOD,8MM FSC	4	M2	19,44	77,76	
29	6	INT	1975952	PLYWOOD,10MM FSC	62,5	M2	25,48	1 592,48	
29	6	INT	1975953	PLYWOOD,12MM FSC	688	M2	28,71	19 752,44	
29	6	INT	1975954	PLYWOOD,15MM FSC	227	M2	34,82	7 904,78	
29	6	INT	1975955	PLYWOOD,18MM FSC	319,125	M2	38,78	12 375,80	
29	6	INT	1976796	RIGID PVC FOAM 15	16	M2	28,75	460,07	
29	6	INT	1978200	MAHAGONY 12MM	170,93	M2	63,94	10 929,91	
29	6	INT	1979172	CABLE 280/310 DUA	1	PC	137,23	137,23	
29	6	INT	1979176	BACKING PLATE SEC	9	PC	6,73	60,60	
29	6	MER	1A40413KZ	ME-F40ELPT EFI	1	PC	9 170,21	9 170,21	
29	6	INT	2014745	GALVANIC ISOLATOR	1	PC	357,85	357,85	1
29	6	INT	2014920	LATCH, PUSH TO CL	2	PC	37,97	75,95	
29	6	INT	2016697	NOTICE LPG PRESSU	2	PC	8,82	17,64	
29	6	INT	2016699	WARNING LPG	2	PC	8,78	17,57	
29	6	INT	2016944	NOTICE LPG LEAK	2	PC	9,58	19,16	
29	6	INT	2016945	LPG SHUTOFF VALVE	2	PC	6,13	12,27	
29	6	INT	2016947	WATERTIGHT	8	PC	3,38	27,00	
29	6	INT	2016948	ISO FIRE	2	PC	3,30	6,61	
29	6	INT	2016949	ISO ESCAPE ROUTE	2	PC	6,17	12,34	
29	6	INT	2016950	SHORE POWER OUTLE	1	PC	6,21	6,21	
29	6	INT	2016953	WARNING PETRO	1	PC	3,05	3,05	
29	6	INT	2016954	LANYARD SWITCH	2	PC	2,79	5,59	
29	6	INT	2016958	HEAD WATER PICKUP	2	PC	6,13	12,27	
29	6	INT	2016961	OVERBOARD DISCHAR	2	PC	6,13	12,27	
29	6	INT	2016964	WARNING ROTATING	2	PC	3,01	6,02	
29	6	INT	2016965	WARNING ROTATING	2	PC	2,47	4,94	
29	6	INT	2017535	HOSE, FUEL 1.5"	15	MT	42,17	632,48	
29	6	INT	2025688	GELCOAT H GREY SP	23	KG	14,95	343,75	
29	6	INT	2025689	GELCOAT S GREY SP	470	KG	14,95	7 024,39	
29	6	INT	2026747	GRAB RAIL FOR BOA	4	PC	24,43	97,72	
29	6	INT	2026923	DECK PLATE, SCREW	3	PC	13,81	41,43	
29	6	INT	2027423	PLEXI 3MM MIRROR	12	M2	126,09	1 513,07	
29	6	INT	2027715	TRACK PVC BLK 40M	30	MT	5,89	176,82	
29	6	INT	2027716	INSERT GUNNEL PVC	21	MT	9,89	207,76	
29	6	INT	2027717	CAP PVC GUNNEL EN	6	PC	6,53	39,15	
29	6	INT	2028879	PIN AND SOCKET	1	PC	13,26	13,26	
29	6	INT	2029356	PLASTIC HDPE 12MM	47,12	M2	160,96	7 584,43	
29	6	INT	2037135	THRU-HULL,PLAS SS	3	PC	9,94	29,83	
29	6	INT	2040629	POST, TABLE LEG	16	PC	29,22	467,46	
29	6	INT	2041229	PLEXI, 8MM 70%	74,09	M2	172,19	12 757,48	
29	6	INT	2046966	ACCESS PLATE, SCR	6	PC	11,96	71,74	
29	6	INT	2046967	PIPE, PVC 50MM SC	38	MT	2,85	100,59	
29	6	INT	2049172	FILTER, CARBON	1	PC	248,56	248,56	1
29	6	INT	2060078	LIGHT, COCKPIT SPR	1	PC	112,44	112,44	
29	6	INT	2062101	PVC6MM PLASTIC	5	M2	35,45	177,24	
29	6	INT	2062102	PVC10MM PLASTIC	17,25	M2	44,50	767,62	
29	6	INT	2062103	PVC13MM PLASTIC	51,57	M2	63,11	3 254,47	
29	6	INT	2062588	PVC19MM PLASTIC	3,6	M2	92,45	332,83	
29	6	INT	2063000	TAPE, VHB RP16	12	MT	2,19	26,27	
29	6	INT	2063104	CLIP, Z 30X90MM	10	PC	20,33	203,33	
29	6	INT	2064861	ADAPTER, PLAS	4	PC	3,30	13,21	
29	6	INT	2065287	BRACKET, SS 50 X	20	PC	5,04	100,74	
29	6	INT	2066273	30 AMP PRONAUTIC	1	PC	701,39	701,39	
29	6	INT	2066643	PAINT, BTM SEAJET	1,5	LT	83,06	124,59	
29	6	INT	2066644	PRIMER SEAJET 117	1,5	LT	50,56	75,84	
29	6	INT	2066645	TAPE,HIN 3/4"RED	2	MT	5,91	11,82	
29	6	INT	2067032	HOSE, PVC 1/2"	145	MT	2,80	405,74	
29	6	INT	2071919	POST, TABLE LEG	3	PC	44,39	133,16	
29	6	INT	2078131	RIGID PVC FOAM,12	32	M2	23,53	753,08	
29	6	INT	2079738	TRIM, D-SEAL 14MM	5	MT	5,02	25,08	
29	6	INT	2080172	HATCH, SLIDING	1	PC	1 460,06	1 460,06	
29	6	INT	2080223	LABEL, BATT INSTL	6	PC	4,32	25,91	
29	6	INT	2081250	HORN,MARINE DROPI	1	PC	71,68	71,68	
29	6	INT	2081251	HINGE,SS TWO PIVO	2	PC	16,50	33,01	

OTWARTRI

29	6	INT	2081404	DRAIN, P-TRAP 1-1/2	3	PC	11,71	35,13	
29	6	INT	2081426B	HOSE, 1-1/4" ID	77	MT	3,83	294,99	
29	6	INT	2081427	DRAIN STRAIGHT PL	3	PC	6,29	18,87	
29	6	INT	2081540	LAMINATE, FORMICA	14	M2	194,50	2 723,03	
29	6	INT	2082022	LAMP, CEILING 12V	5	PC	66,18	330,91	1
29	6	INT	2082188	BARREL BOLT	1	PC	21,80	21,80	
29	6	INT	2082191	HINGE, SS NON-MOR	17	PC	15,68	266,54	
29	6	INT	2083993	FIBERGLASS BOAT	1	PC	1,98	1,98	
29	6	INT	2085172	PANEL, ERRE FINISH	49,24	M2	214,58	10 566,10	
29	6	INT	2086306	BUMPER, CLEAR RND	200	PC	0,29	58,94	224
29	6	INT	2086308	SUPPORT LEG 36.5	2	PC	66,63	133,26	
29	6	INT	2088143	EYE, BOW 316SS	2	PC	22,32	44,64	1
29	6	INT	2088144	EYE, BOW 316SS	2	PC	18,44	36,87	1
29	6	INT	2088145	ANCHOR DEADEND W1	1	PC	9,64	9,64	
29	6	INT	2088309	PLACARD, MIN BATT	2	PC	0,15	0,30	
29	6	INT	2088311	LABEL, WARNING/705	2	PC	16,84	33,68	
29	6	INT	2088176	QS755 PH WINDOW S	1	PC	225,00	225,00	
29	6	INT	2088758	PLASTIC HDPE 19MM	15,1	M2	235,91	3 562,17	
29	6	INT	2088770	WIPER WASHER RESE	1	PC	136,03	136,03	1
29	6	INT	2088804	PLASTIC HDPE 12MM	28,19	M2	246,81	6 951,98	
29	6	INT	2100505	TUBE, PVC 63MM OD	17	MT	19,62	333,52	
29	6	INT	2101136	THRU-HULL, PLAS 1	1	PC	27,33	27,33	
29	6	INT	2101139	HINGE CONTINUOUS25	8	PC	25,26	202,08	
29	6	INT	2101795	BONDING PUTTY, NAU	530	LT	11,83	6 272,45	
29	6	INT	2102118	BONDING PUTTY, FIB	340	KG	10,09	3 431,65	
29	6	INT	2103878	CLEAT, 10"x2" HEAVY	6	PC	75,57	453,42	
29	6	INT	2103885	HOLDER, MAGNET FLU	1	PC	86,52	86,52	
29	6	INT	2106299	TAPE, PLUMBERS 12M	2	MT	3,10	6,20	
29	6	INT	2106441	POLYSTRAND TREV.0	100	MT	1,78	178,44	119,8
29	6	INT	2106442	POLYSTRAND TREV.0	40	MT	2,68	107,07	23,45
29	6	INT	2106443	POLYSTRAND TREV.0	70	MT	3,57	249,82	25,55
29	6	INT	2106823	TAPE, VHB RP62	14	MT	4,00	55,99	
29	6	INT	2106830	PLASTIC HIPS 3MM	9	M2	65,93	593,36	
29	6	INT	2106831	TRACK, PLASTIC CU	25	MT	5,12	127,93	
29	6	INT	2106852	ALARM SMOKE 9V BA	1	PC	36,11	36,11	1
29	6	INT	2111290	WINDLASS DP2 700W	1	PC	1 597,27	1 597,27	
29	6	INT	2111292	CLAMP HOSE NR16	13	PC	1,20	15,64	
29	6	INT	2112305	TANK, FUEL PETROL	8	PC	1 365,67	10 925,39	
29	6	INT	2112306	TANK, WATER SAD	1	PC	409,23	409,23	
29	6	INT	2112307	TANK, WASTE SAD	1	PC	409,23	409,23	
29	6	INT	2112315	BRACKET, 500MM FU	8	PC	22,60	180,76	
29	6	INT	2112316	HEATER, WATER 22L	1	PC	559,93	559,93	1
29	6	INT	2112319	TRACK, 19MM LOW P	3	PC	69,25	207,75	
29	6	INT	2112320	CAR, 19MM M6 HOLE	4	PC	121,65	486,60	
29	6	INT	2112321	END STOP, SLIDING	4	PC	19,11	76,44	
29	6	INT	2112323	STEERING, TIE BAR	1	PC	926,13	926,13	
29	6	INT	2112324	FITTING, LPG BLKHD	1	PC	57,13	57,13	
29	6	INT	2112325	VALVE, LPG QUICK	1	PC	66,90	66,90	1
29	6	INT	2112326	SHOWER, TRANSOM T	1	PC	196,70	196,70	
29	6	INT	2112331	HOLDER, SHOWER BUL	1	PC	33,06	33,06	
29	6	INT	2114082	LAMP, CEILING 12V	1	PC	62,52	62,52	1
29	6	INT	2114084	PANEL, SW Q/S855	1	PC	151,22	151,22	1
29	6	INT	2114088	HARNESS, QS855 AC	1	PC	281,21	281,21	1
29	6	INT	2114090	HARNESS, 220V AC	1	PC	48,65	48,65	1
29	6	INT	2114091	HARNESS, 220V AC	1	PC	35,10	35,10	1
29	6	INT	2114093	HARNESS, BOW THRU	1	PC	578,32	578,32	1
29	6	INT	2114095	PANEL, SINGLE ENG	1	PC	270,20	270,20	
29	6	INT	2114096	PANEL, TWIN ENGIN	1	PC	457,88	457,88	1
29	6	INT	2114097	PANEL, AC DISTRIB	1	PC	419,86	419,86	1
29	6	INT	2114098	PANEL, SPEAKER SE	1	PC	77,34	77,34	1
29	6	INT	2118346	ACRYLIC 44% VISIB	19	M2	214,29	4 071,49	
29	6	INT	2118351	ROLLER, BOW SS PI	1	PC	480,55	480,55	
29	6	INT	2118355	CHAFE PLATE	1	PC	26,33	26,33	
29	6	INT	2118378	STRIKER, PLATE SS	1	PC	6,90	6,90	
29	6	INT	2118395	EDGE BAND, PVC WA	500	MT	0,80	399,95	
29	6	INT	2118401	HATCH, DECK 17X17	1	PC	558,84	558,84	
29	6	INT	2118402	PLATE, HEAT SS	1	PC	92,90	92,90	
29	6	INT	2118406	LAMINATE, FORMICA	123,985	M2	162,51	20 148,31	
29	6	INT	2118410	RAIL, HARDTOP TOP	2	PC	140,30	280,60	
29	6	INT	2118411	SUPPORT, SS AFT	3	PC	42,43	127,28	
29	6	INT	2118412	RAIL, BOW PRT QS85	4	PC	571,24	2 284,96	
29	6	INT	2118413	RAIL, BOW STB QS85	4	PC	571,24	2 284,96	
29	6	INT	2118415	STOVE, LPG 2BURNER	1	PC	442,05	442,05	
29	6	INT	2118417	TRACK, SLIDING DOO	1	PC	79,65	79,65	
29	6	INT	2118419	BUTTON, ELASTIC	60	PC	0,17	10,10	
29	6	INT	2118420	HOSE, 1/4 LH NUT	1	PC	27,41	27,41	
29	6	INT	2118421	HARNESS, TRIM PLA	1	PC	83,78	83,78	1
29	6	INT	2118422	TUBING, COPPER 8MM	22	MT	12,21	268,60	
29	6	INT	2118424	HOSE, 8MM COMP TO	1	PC	34,02	34,02	1
29	6	INT	2118425	SLIDER, FWD DINET	2	PC	89,17	178,33	
29	6	INT	2118427	PORTLIGHT, OVAL	4	PC	185,13	740,53	
29	6	INT	2118434	HINGE, PORT	3	PC	48,23	144,69	
29	6	INT	2118443	PLATE, MOUNTING S	2	PC	191,17	382,35	
29	6	INT	2118445	THRU-HULL BRZ 1"	5	PC	30,31	151,56	
29	6	INT	2118446	LAMINATE, FORMICA	286	M2	157,45	45 031,84	



29	6	INT	2118450	CANVAS, CANOPY KI	1	PC	1 377,93	1 377,93	
29	6	INT	2118458	GALLEY FAUCET HOT	1	PC	103,02	103,02	
29	6	INT	2118463	MICROWAVE	1	PC	219,00	219,00	
29	6	INT	2118468	TRIM EDGE, SS TRN	1	PC	278,71	278,71	
29	6	INT	2118469	TRIM EDGE, SS TRN	1	PC	272,02	272,02	
29	6	INT	2118472	BLADE, 32", FLEX	2	PC	44,35	88,70	2
29	6	INT	2118475	SWITCH, SGL LIGHT	8	PC	19,51	156,08	
29	6	INT	2118476	SWITCH, DOUBLE LIG	3	PC	30,46	91,38	
29	6	INT	2118477	LIGHT, LED SWIVEL	5	PC	81,13	405,63	5
29	6	INT	2118495	ADAPTER 1/2" BSP	2	PC	4,54	9,07	
29	6	INT	2118496	ADAPTER, 3/8" BSP	2	PC	6,78	13,57	
29	6	INT	2118500	REDUCER, BRASS 3/8	1	PC	1,64	1,64	1
29	6	INT	2118504	PLATE, BACKING SS	8	PC	18,55	148,41	
29	6	INT	2118646	STEERING KIT 7.6M	1	PC	285,18	285,18	
29	6	INT	2118659	DRAIN, SINK/SHOWER	1	PC	18,15	18,15	
29	6	INT	2118660	CLAMP, COPPER PIPE	10	PC	1,18	11,79	4100
29	6	INT	2118664	SWITCH FRAME, 1 G	5	PC	3,60	18,00	3
29	6	INT	2118665	THRU-HULL PLAS 1/	1	PC	13,03	13,03	
29	6	INT	2118670	MOTOR, WIPER 2D	1	PC	314,19	314,19	1
29	6	INT	2118671	MOTOR, WIPER 2D 1	1	PC	314,19	314,19	1
29	6	INT	2118673	THRUSTER, BOW VETU	1	PC	1 925,65	1 925,65	6274000 29.12
29	6	INT	2118674	HELM SEAT SLIDETR	1	PC	92,66	92,66	1
29	6	INT	2118675	LABEL, SLING	8	PC	3,23	25,84	
29	6	INT	2118680	SEAT, HELM BKT SM	1	PC	496,78	496,78	1
29	6	INT	2118681	DRAWER SLIDE	3	PR	27,30	81,90	
29	6	INT	2118683	HINGE, 100DEG SEL	4	PC	2,60	10,40	
29	6	INT	2119768	BUTTON, ELASTIC	8	PC	0,17	1,35	
29	6	INT	2120375	294KW MAX POWER P	3	PC	6,00	18,00	
29	6	INT	2124864	GUIDE, SLIDING DO	1	PC	35,80	35,80	
29	6	INT	2124880	PLATE, CRNR BRCKT	12	PC	7,20	86,37	
29	6	INT	2124959	TRACK FOR FWD DIN	2	PC	64,50	129,00	
29	6	INT	2124960	ADAPTER, HINGE FR	4	PC	1,85	7,40	
29	6	INT	2124962	FRAME WITHOUT GAS	1	PC	4,03	4,03	
29	6	INT	2124963	GASKET SINGLE SWI	1	PC	1,37	1,37	1
29	6	INT	2124965	SCREEN, HATCH	1	PC	39,52	39,52	
29	6	INT	2124967	STAIN, FOR MACHIA	0,1	LT	21,81	2,18	
29	6	INT	2124968	BREAKER, XPOLE RA	1	PC	14,15	14,15	
29	6	INT	2124969	BREAKER, XPOLE RA	1	PC	12,55	12,55	1
29	6	INT	2124972	SLIDE, DRAWER SYS	1	PC	18,60	18,60	
29	6	INT	2124973	BRACKET, FIXING	4	PC	1,27	5,08	
29	6	INT	2124974	BRACKET, FIXING	3	PC	1,27	3,81	
29	6	INT	2127723	END CAP, T-TRACK	5	PC	31,50	157,50	
29	6	INT	2127724	BARREL BOLT	2	PC	25,22	50,44	
29	6	INT	2127726	BRACKET, MINI HOL	7	PC	9,19	64,36	
29	6	INT	2127733	BAG, CKPT TABLE	1	PC	63,77	63,77	
29	6	INT	2127738	COVER, SLIDING DO	1	PC	31,50	31,50	
29	6	INT	2127743	BRACKET, SLIDING	5	PC	3,30	16,50	
29	6	INT	2127749	CYLINDER, GAS	1	PC	16,59	16,59	
29	6	INT	2127750	SPACER, FWD BERTH	6	PC	3,39	20,33	
29	6	INT	2127752	BOX, INTEGRO FLOW	1	PC	16,20	16,20	1
29	6	INT	2127753	FRAME, INTEGRO FL	6	PC	8,86	53,16	5+1
29	6	INT	2127754	BOX, INTEGRO FLOW	5	PC	4,61	23,05	3
29	6	INT	2127755	OUTLET, SCHUKO IN	6	PC	11,30	67,80	6
29	6	INT	2127756	SUPPORT, FWD DINET	1	PC	52,45	52,45	
29	6	INT	2127757	PLATE, CORNER BRA	12	PC	7,20	86,37	
29	6	INT	2127787	NUT, TEE M5X8 4-PR	44	PC	1,17	51,66	
29	6	INT	2127788	NUT, TEE M6X12 3	11	PC	1,35	14,84	
29	6	INT	2129053	ISOLATOR, SEALANT	3	LT	21,05	63,15	
29	6	INT	2129056	HARDENER, ISOLATO	3	LT	32,33	97,00	
29	6	INT	2129059	THINNER (POLYURET	4	LT	9,47	37,89	
29	6	INT	2129061	UNDERCOAT, CLEAR	3	LT	16,55	49,64	
29	6	INT	2129066	VARNISH, CLEAR TO	3	LT	22,57	67,70	
29	6	INT	2129067	HARDENER, CLR TOP	4	LT	41,93	167,73	
29	6	INT	2132430	RAIL, HAND SS 600	4	PC	60,90	243,58	
29	6	INT	2132433	NEW DEAD BOLT	6	PC	14,20	85,23	4
29	6	INT	2132438	STANDOFF, GALLEY C	3	PC	3,48	10,44	
29	6	INT	2132443	HINGE, GLASS DOOR	1	PC	2,88	2,88	
29	6	INT	2132445	ROD, FWD BERTH HA	7	PC	17,64	123,48	
29	6	INT	2132449	DINETTE BACKREST	10	PC	13,25	132,48	
29	6	INT	2132450	CABLE KIT, L6 VER	1	PC	377,08	377,08	1
29	6	INT	2134844	TANK, GREY WATER	1	PC	409,23	409,23	
29	6	INT	2134845	BREAKER, 60 AMP C	1	PC	99,69	99,69	
29	6	INT	2138218	ANTENNA, SOFTWARE	1	PC	6,17	6,17	1
29	6	INT	2138226	LABEL, DANGER	2	PC	5,19	10,38	
29	6	INT	2141634	PLATE, HEAT SS GA	1	PC	23,05	23,05	
29	6	INT	2141635	FRAME, MEGGIS SWI	1	PC	0,91	0,91	
29	6	INT	2141636	CATCH, SS BALL	2	PC	12,42	24,84	
29	6	INT	2141639	HINGE, CONTINUOUS	1	PC	46,31	46,31	
29	6	INT	2141642	PG ANTI-FREEZE	14	LT	19,34	270,82	
29	6	INT	2141652	CABLE, DOCKSIDE 16	1	PC	285,86	285,86	1
29	6	INT	2148059	ANTIFREEZE, WIND	2,5	LT	2,40	6,00	
29	6	INT	2148064	ACRYLIC 12MM WHIT	6,49	M2	511,99	3 322,79	
29	6	INT	2148065	TRIM RING, SCRNB	2	PC	102,13	204,26	
29	6	INT	2150462	CABLE, USB	2	PC	37,38	74,77	
29	6	INT	2150704	TANK, FUEL 10L	1	PC	85,63	85,63	1



29	6	INT	2150706	PICKUP, FUEL FEED	1	PC	97,88	97,88	1
29	6	INT	2150710	GRILL, AIR DUCT	1	PC	61,42	61,42	1
29	6	INT	2150713	VENT, AIR 75MM	1	PC	72,50	72,50	1
29	6	INT	2152371	HEATER, 4KW	1	PC	4 040,72	4 040,72	1
29	6	INT	2152397	VENT, SCOOPED AIR	2	PC	144,11	288,22	1
29	6	INT	2152398	DIVIDER WARM AIR	1	PC	100,11	100,11	1
29	6	INT	2155970	HINGE, SS CONTINUO	1	PC	40,00	40,00	1
29	6	INT	2155975	ARCTIC WHITE TOPC	310	KG	11,49	3 562,92	1
29	6	INT	2160375	CABLE, POWER N2K	1	PC	19,32	19,32	1
29	6	INT	2160376	BACKBONE 4-WAY	1	PC	56,04	56,04	1
29	6	INT	2160377	TERMINATOR	1	PC	17,18	17,18	1
29	6	INT	2160379	CABLE, N2KEXT-6'	1	PC	30,06	30,06	1
29	6	INT	2160380	CABLE, N2KEXT-15'	1	PC	40,28	40,28	1
29	6	INT	2160396	CABLE, NMEA 0183/V	1	PC	42,94	42,94	1
29	6	INT	2160398	BAG, SIMRAD OWNER	1	PC	4,29	4,29	1+1
29	6	INT	2161853	SPRING, CMP50X10ID	2	PC	9,27	18,54	2
29	6	INT	2161854	WASHER, SPLIT LOC	10	PC	0,03	0,34	1
29	6	INT	2170066	CABLE CLAMP6MM	80	PC	0,14	11,19	1
29	6	INT	2176305	LADDER, SWIM	1	PC	373,64	373,64	1
29	6	INT	2176306	STRIKER, BRSS/NCKL	2	PC	22,69	45,38	1
29	6	INT	2184201	LIGHT, LED	2	PC	10,38	20,76	2
29	6	INT	2184402	DATASHEET, QUICKSI	1	PC	0,72	0,72	1
29	6	INT	2187018	GRAPHIC, QUICKSILV	4	PC	62,64	250,57	1
29	6	INT	2189728	DOME RADAR 3G SIM	1	PC	3 283,13	3 283,13	1
29	6	INT	2189729	MODULE, RADAR IF 3	1	PC	423,19	423,19	1
29	6	INT	2189730	CABLE, RADAR 10M 3	1	PC	198,39	198,39	1
29	6	INT	2193399	ETHEXT-6'YL DISP	1	PC	34,35	34,35	1
29	6	INT	2193475	ARM, PANTOGRAPH WI	2	PC	146,08	292,16	2
29	6	INT	2193481	POT HOLDER CAN LP	2	PC	77,04	154,09	2
29	6	INT	2193483	BRACKET, 160MM RAD	1	PC	227,19	227,19	1
29	6	INT	2193484	CANVAS, CKPT SUN S	1	PC	519,35	519,35	1
29	6	INT	2193493B	DOOR, AFT CABIN EN	6	PC	3 582,94	21 497,62	1
29	6	INT	2193494	DOOR, STBD CABIN E	6	PC	2 014,90	12 089,39	1
29	6	INT	2193495	RAIL, CKPT SUN SHA	2	PC	744,80	1 489,61	1
29	6	INT	2193496	WINDSHIELD, 855CR	12	PC	543,30	6 519,61	1
29	6	INT	2195999	LANYARD, 5FT ADJUS	1	PC	109,46	109,46	1
29	6	INT	2196000	NAVIONICS SILVER	1	PC	4,29	4,29	1
29	6	INT	2196015	CABLE KIT, BATTERY	1	PC	277,90	277,90	1
29	6	INT	2199988	CABLE KIT, BATTERY	2	PC	361,66	723,32	1
29	6	INT	2199996	HARNESS, BOW WINDL	1	PC	304,18	304,18	1
29	6	INT	2200005	HARNESS, MAIN QS85	1	PC	1 423,01	1 423,01	1
29	6	INT	2200007	KIT, DSL HEAT UTIL	1	PC	284,09	284,09	1
29	6	INT	2200010	STEERING WHEEL, BL	1	PC	87,78	87,78	1
29	6	INT	2200017	PLATE, 6MM AL SUNS	4	PC	6,36	25,43	1
29	6	INT	2204060	WASHER 50MM SOUND	5	PC	0,93	4,63	1
29	6	INT	2204066	LANYARD, ANCHOR SA	1	PC	83,78	83,78	1
29	6	INT	2211413	LOGO, QUICKSILVER	1	PC	12,21	12,21	1
29	6	INT	2211415	SPEAKER, WHT FUSIO	3	PC	105,17	315,50	1
29	6	INT	2222914	RAIL, AFT SEAT	1	PC	103,60	103,60	1
29	6	INT	2223769	ANODE CIRCULAR SG	1	PC	33,47	33,47	1
29	6	INT	2225341	GRAPHIC, 855WE	5	PC	7,44	37,20	1
29	6	INT	2226490	PLATE, BUILDERS	1	PC	14,00	14,00	1
29	6	INT	2225513	HOSE, 375IN ID HD	5,1	MT	4,68	23,88	1
29	6	INT	2225514	REFER VITRIFRIGO	1	PC	1 103,02	1 103,02	1
29	6	INT	2225515	FRAME VITRIFRIGO	1	PC	68,03	68,03	1
29	6	INT	2225530	VENT NOZZLE 75MM	1	PC	72,37	72,37	1
29	6	INT	2228214	PUMP, MACERATOR SP	1	PC	227,34	227,34	1
29	6	INT	2228365	STEREO, FUSION MS-	1	PC	621,94	621,94	1
29	6	INT	2228367	TRIM TAB, KIT 11X1	1	PC	2 399,70	2 399,70	1
29	6	INT	2230672	DRAIN SPLASH WELL	4	PC	4,90	19,60	1
29	6	INT	2234984	ADHESIVE, 50ML MET	3	PC	33,64	100,91	3
29	6	INT	2234991	WASHER, 12/12-1/4	3	PC	0,07	0,20	1
29	6	INT	2236507	COVER, 12/12 BLK S	3	PC	0,07	0,20	1
29	6	INT	2240039	MANUAL, OWNER'S WD	1	PC	26,00	26,00	1
29	6	INT	2240950	MIXER, 50ML STATIC	20	PC	2,15	42,94	8
29	6	INT	2243406	HULL STRIPE, STB W	4	PC	52,70	210,79	1
29	6	INT	2243407	HULL STRIPE, PORT	4	PC	52,70	210,79	1
29	6	INT	2245643	SHOWER HOT-COLD P	1	PC	363,60	363,60	1
29	6	INT	2256954	CLEAT FENDER SS T	2	PC	70,52	141,04	1
29	6	INT	2257324	PUMP BILGE MANUAL	1	PC	38,26	38,26	1
29	6	INT	2257980	TRANSDUCER, HDI SK	1	PC	92,33	92,33	1
29	6	INT	2262909	CABLE, 9 PIN XDCR	1	PC	141,15	141,15	1
29	6	INT	2263685	MODULE, DAB+KIT W-	1	PC	308,17	308,17	1
29	6	INT	2271062	LIGHT LED NAV SID	1	PC	111,38	111,38	1
29	6	INT	2273554	TUNNEL BOW THRUST	2	MT	133,88	267,76	1+1
29	6	INT	2276979	BAG, QUICKSILVER O	1	PC	15,96	15,96	1
29	6	INT	2276981B	HATCH SCREEN W/BL	2	PC	434,77	869,53	1
29	6	INT	2280535	BOOT, INSULATOR RE	2	PC	1,47	2,95	2
29	6	INT	2283308	GPS, NSS EVO3 9IN	1	PC	3 477,92	3 477,92	1
29	6	INT	2284095	ADHESIVE, GLUE FLE	9	PC	43,36	390,27	1
29	6	INT	2286835	FITTING 90DEG 1.5	1	PC	24,71	24,71	1
29	6	INT	2286836	SCREEN HATCH SPA	2	PC	1 450,68	2 901,36	1
29	6	INT	2286853	TOILET SPX ELEC S	1	PC	568,35	568,35	1
29	6	INT	2286866	LIGHT LED NAV A/R	1	PC	124,81	124,81	1
29	6	INT	2288264B	FLEXITEEK, CTR CK	2	PC	685,26	1 370,52	1

29	6	INT	2288265B	FLEXITEEK, TRACK	2	PC	122,78	245,53	
29	6	INT	2288266B	FLEXITEEK, STBD S	1	PC	250,92	250,92	
29	6	INT	2288267B	FLEXITEEK, PORT S	1	PC	250,92	250,92	
29	6	INT	2288268B	FLEXITEEK, OB PRT	1	PC	504,53	504,53	
29	6	INT	2288269B	FLEXITEEK, OB STB	1	PC	443,02	443,02	
29	6	INT	2288270B	FLEXITEEK, OB PAF	1	PC	88,66	88,66	
29	6	INT	2288271B	FLEXITEEK, OB SAF	1	PC	88,66	88,66	
29	6	INT	2288272B	FLEXITEEK, LPG LI	1	PC	100,03	100,03	
29	6	INT	2288273B	FLEXITEEK, STB WA	1	PC	301,23	301,23	
29	6	INT	2288700	HARNESS, ELECTRIC	1	PC	69,04	69,04	1
29	6	INT	2288706	PANEL, BREAKER SGL	1	PC	41,51	41,51	
29	6	INT	2288722	MOORING KIT, QS>7M	2	PC	609,69	1 219,38	2
29	6	INT	2294649	HINGE, AFT BR FOLD	1	PC	386,28	386,28	
29	6	INT	2294651	HINGE, AFT BR FOLD	1	PC	386,28	386,28	
29	6	INT	2294981	HINGE, TRANSOM DOO	1	PC	260,83	260,83	
29	6	INT	2301442	MONITOR, CO 12-24V	3	PC	141,54	424,63	3
29	6	INT	2301778	TOPCOAT, GREY RAL	360	KG	15,32	5 516,78	
29	6	INT	2307427	HARNESS, POWER DIE	1	PC	59,15	59,15	
29	6	INT	2309687	WOOD, BEECH	0,4	M3	2 947,00	1 178,80	
29	6	INT	2313129	CLOTH, FBRGLS QX12	7826	KG	6,95	54 363,31	
29	6	INT	2313131	RESIN, DCPD INFUSI	600	KG	6,74	4 041,60	
29	6	INT	2313622	LIGHT, LED 12V CR	4	PC	47,62	190,46	
29	6	INT	2313742	CORE, PET AIREX T	308	M2	35,11	10 814,31	
29	6	INT	2313743	CORE, PVC AIREX C	132,43	M2	120,91	16 012,27	
29	6	INT	2313744	CORE, PVC AIREX C	335	M2	131,18	43 948,51	
29	6	INT	2313745	CLOTH, FBRGLS LT6	1250	KG	8,21	10 261,88	
29	6	INT	2314523	CORE, PUR DUNA HPT	8,5	M3	806,55	6 855,69	
29	6	INT	2316254	WOOD, BEECH CROAT	0,2	M3	3 767,95	753,59	
29	6	INT	2321634	CUSH, AFT BERTH H	1	PC	90,85	90,85	
29	6	INT	2321635	CUSH, AFT BERTH H	1	PC	90,85	90,85	
29	6	INT	2321666	MATTRESS, FWD BER	1	PC	371,85	371,85	
29	6	INT	2321667	MATTRESS, FWD BER	1	PC	228,95	228,95	
29	6	INT	2321668	MATTRESS, FWD BER	1	PC	95,46	95,46	
29	6	INT	2321669	MATTRESS, AFT BER	2	PC	312,71	625,41	
29	6	INT	2321670	MATTRESS, AFT BER	1	PC	91,91	91,91	
29	6	INT	2321671	CUSH, AFT BERTH S	1	PC	81,87	81,87	
29	6	INT	2322479	CLOTH, FBRGLS BX0	3948	KG	8,21	32 411,11	
29	6	INT	2322487	CARPET, GALLEY, HE	1	PC	424,54	424,54	
29	6	INT	2322488	CARPET, TOP STEP	1	PC	45,97	45,97	
29	6	INT	2322489	CARPET, BOTTOM ST	1	PC	49,26	49,26	
29	6	INT	2322490	CARPET, LANDING W	1	PC	222,79	222,79	
29	6	INT	2322491	CARPET, FWD BERTH	1	PC	237,07	237,07	
29	6	INT	2322492	CARPET, FWD PORT	1	PC	63,70	63,70	
29	6	INT	2322493	CARPET, FWD PORT	1	PC	60,16	60,16	
29	6	INT	2322494	CARPET, FWD STBD	1	PC	63,70	63,70	
29	6	INT	2322495	CARPET, FWD STBD	1	PC	60,16	60,16	
29	6	INT	254904	HOSE, 5/8" HW	10	MT	20,45	204,51	
29	6	INT	256719	CLAMP, 40X60 INOX	4	PC	1,13	4,54	
29	6	INT	263954	CLAMP, 13X27 INOX	20	PC	0,92	18,40	
29	6	INT	490219	HOSE, CORR SAN/WA	20	MT	7,40	148,08	
29	6	INT	634550	BRACKET MOUNT SS	22	PC	4,39	96,61	
29	6	INT	634592	BRACKET MOUNT SS	6	PC	4,63	28,96	
29	6	Q/S	79695T	BOOT-INSULATOR	2	PC	10,57	21,13	2
29	6	INT	808775	BOX-BATTERY @6	2	PC	18,47	36,95	
29	6	INT	813980	CYLINDER GAS 80PS	6	PC	16,59	99,52	
29	6	Q/S	825191A03	HOSE KIT-RIGGING	1	PC	67,91	67,91	1
29	6	INT	830968	COVER, CLAMP END	51	PC	0,18	9,07	50
29	6	INT	830976	COVER, CLAMP END	5	PC	0,15	0,73	5
29	6	INT	846899B	HOSE, SANI 1.5"	48	MT	23,58	1 131,65	
29	6	POL	855WEOB0018	ACTIV 855 WEEKEND	2	PC	141 454,40	282 908,81	
29	6	Q/S	8590743	BEZEL-CHROME	4	PC	20,29	81,17	4
29	6	Q/S	859318T2	WEATHER CAP	1	PC	7,58	7,58	1
29	6	UTE	870602	TANKSTRAP 1.5 M	1	PC	4,36	4,36	1
29	6	UTE	871336	MAIN SWITCH ON/OFF	1	PC	9,68	9,68	1
29	6	INT	871690B	SOCKET 12V FLUSH	2	PC	10,65	21,30	1
29	6	UTE	871953	ALUMINIUM TAPE	0,2	PX	98,54	19,71	0,2
29	6	UTE	873475	THROU HULL FITTING	3	PC	2,78	8,34	
29	6	UTE	873642	3/4" THRU-HULL FI	4	PC	19,67	79,48	
29	6	INT	873748B	SOCKET 12V ROUND	2	PC	6,69	13,39	2
29	6	UTE	874283	COMPASS SILVA 58	4	PC	93,59	374,35	
29	6	UTE	874627	DRAINSLEEVE WALLA	1	PC	135,81	135,81	1
29	6	UTE	874692	FIREPORT	1	PC	19,10	19,10	
29	6	UTE	874706	FIRE EXTINGUISHER	1	PC	86,37	86,37	1
29	6	UTE	874760	SWITCH WATER TAP	1	PC	3,33	3,33	1
29	6	UTE	874770	CLAMSHHELL COVER	1	PC	1,47	1,47	
29	6	UTE	874819	STORAGE NET BLACK	1	PC	8,84	8,84	1
29	6	INT	875103	CONTROL SHEET	1	PC	0,76	0,76	
29	6	INT	875330WHITE	PLASTIC PLUG WHIT	2	PC	0,67	1,33	
29	6	INT	87535001INOX	S.S MIDGET VENT	1	PC	2,53	2,53	
29	6	INT	875351001M05	8" STAND CLEAT, NO	1	PC	21,56	21,56	
29	6	INT	875564	LOCKSET STRIKING	1	PC	213,87	213,87	
29	6	INT	875640DOUILLE	DOUILLE 9X8,5	10	PC	0,80	8,00	
29	6	INT	875640VIS	SCREW ALUMINIUM	10	PC	0,80	8,00	
29	6	INT	875682	STICKY WASHER	80	PC	0,17	13,81	
29	6	INT	875839	STICKER "3 YEAR H	4	PC	4,11	16,45	



29	6	INT	875851004	SINGLE BATTERY SW	1	PC	29,26	29,26	1
29	6	INT	875897-BPTECH	OIL F/HYDRAULIC S	160	KG	9,20	1 472,00	
29	6	INT	875904	INOX U-BOLT HEAT	2	PC	39,36	78,73	
29	6	INT	875904002GM	S.S STERN EYE	2	PC	6,74	13,47	
29	6	INT	875NAUO/B300CV	KIT PUMP BYPASS	1	PC	1 143,65	1 143,65	
29	6	INT	877020B	HOSE WASTE 19MM	44	MT	4,13	181,54	
29	6	UTE	877238	RELAY CHARGING	2	PC	126,41	256,81	2
29	6	Q/S	878492K14	JUNCTION BOX KIT	2	PC	71,95	143,90	2
29	6	Q/S	878492T14	JUNCTION BOX-4WAY	1	PC	56,20	56,20	1+1
29	6	Q/S	88285508	POLY BOAT OG MLT1	1	PC	48,50	48,50	
29	6	Q/S	886560	START BATTERY 34M	4	PC	688,92	2 755,70	
29	6	Q/S	888429K11	RELAY HARNESS 3P	1	PC	24,67	24,67	
29	6	Q/S	888462A1	CABLE PULLER ASY	1	PC	37,30	37,30	
29	6	Q/S	892323T01	HARNESS-ADAPTOR	1	PC	34,40	34,40	1
29	6	Q/S	892380K12	40 CM STD KT W/24	1	PC	2 322,53	2 322,53	
29	6	Q/S	892438K12	HOSE KIT-12 FT	1	PC	178,00	178,00	1
29	6	Q/S	892451T25	HARNESS ASSY	1	PC	216,14	216,14	1
29	6	Q/S	892453A01	CABLE ASY-FML/FML	1	PC	17,13	17,13	1+1
29	6	Q/S	892517	FITTING-3/4 INCH	1	PC	39,53	39,53	1
29	6	Q/S	892528	FITTING-ELBOW	4	PC	50,35	201,41	4
29	6	Q/S	893377K04	COM MOD-SINGLE	1	PC	509,75	509,75	1
29	6	Q/S	893452A01	CABLE ASY-LINK	1	PC	8,25	8,25	1+1
29	6	Q/S	896537K25	HARNES W/KEY SWTH	1	PC	548,94	548,94	1
29	6	Q/S	897728	ELBOW	2	PC	43,99	87,99	2
29	6	Q/S	898998A46	ENERTIA 14X19 RH	1	PC	1 521,20	1 521,20	1
29	6	Q/S	898999A46	ENERTIA 14X19 LH	1	PC	1 521,24	1 521,24	1
29	6	Q/S	8M0046914	HOSE KIT-2FT	1	PC	152,82	152,82	1
29	6	Q/S	8M0046928	HOSE KIT-24FT	1	PC	377,22	377,22	1
29	6	Q/S	8M0075245	RC4500-DUL OB TRM	1	PC	827,98	827,98	1
29	6	Q/S	8M0075945	HARNESS ASSY	1	PC	68,75	68,75	1
29	6	Q/S	8M0079291	ERC-SLM CNSL TRIM	1	PC	1 112,41	1 112,41	
29	6	Q/S	8M0082545	CABLE T/S G2 22FT	2	PC	73,13	146,26	2
29	6	Q/S	8M0082547	CABLE T/S G2 24FT	2	PC	76,83	153,67	2
29	6	Q/S	8M0101088	KT-TACH/SPD 80WHT	1	PC	943,29	943,29	1
29	6	Q/S	8M0101089	TACH/SPD WHT DUAL	1	PC	1 375,95	1 375,95	1
29	6	Q/S	8M0110639	VSSLNK SINGLE KIT	1	PC	588,98	588,98	
29	6	Q/S	8M0111544	ACTIVE TRIM DTS	1	PC	834,34	834,34	1
29	6	Q/S	8M0111552	ACT TRIM 150-250D	1	PC	1 047,20	1 047,20	1
29	6	Q/S	8M0138392	TOOL KIT-DIAGN G3	1	PC	1 353,14	1 353,14	
29	6	Q/S	8M8026635	SPITFIRE 10.1X14	1	PC	380,92	380,92	
29	6	INT	913053	EXHAUST HOSE 2"CO	13	MT	50,11	651,48	